

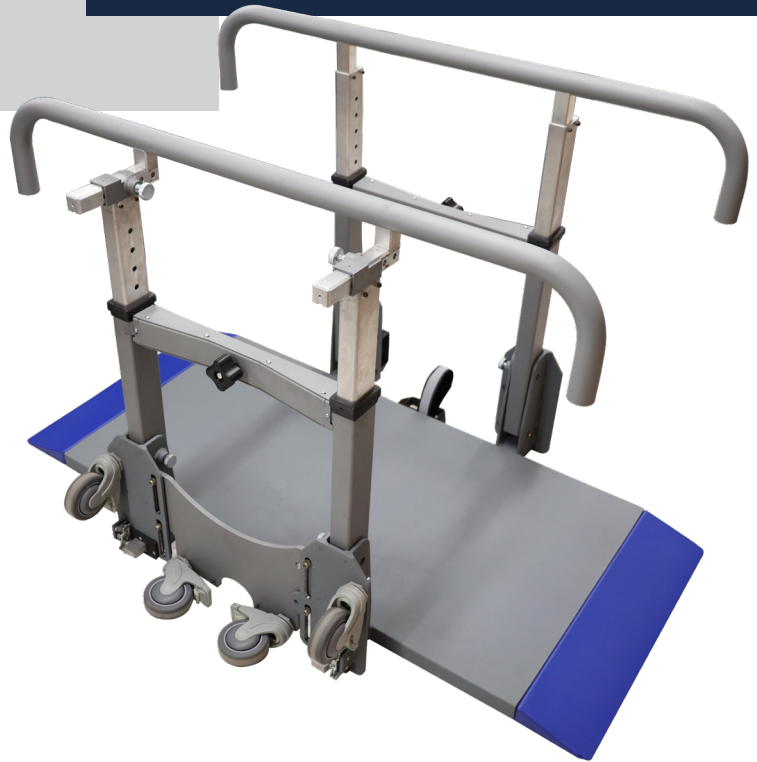
Name:	
School/Organization:	
Dealer/Rep:	

Phone:			
E-mail:			
Sales Rep:		Quote:	

# PORTABLE PARALLEL BARS

## STANDARD FEATURES:

- Load capacity: 600 lbs on the base
  - 300 lbs per bar
- Foldable with casters for easy transport
- Transport mode:
  - 12.25-17.5"W x 60"L x 39.5"H
  - 55° Turn radius
- Extended mode:
  - 45.5"W x 60"L x 28.5-41"H
  - Adjustable handrail: 22.75-26.5"W
- Unit weighs 78 lbs
- Dual lock mechanism for height adjustment
- (4) 4" Total locking medical grade caster system
- Aluminum handrails
- Welded aluminum frame and walking surface
- Anti-microbial and anti-bacterial powder coat
- Anti-slip platform

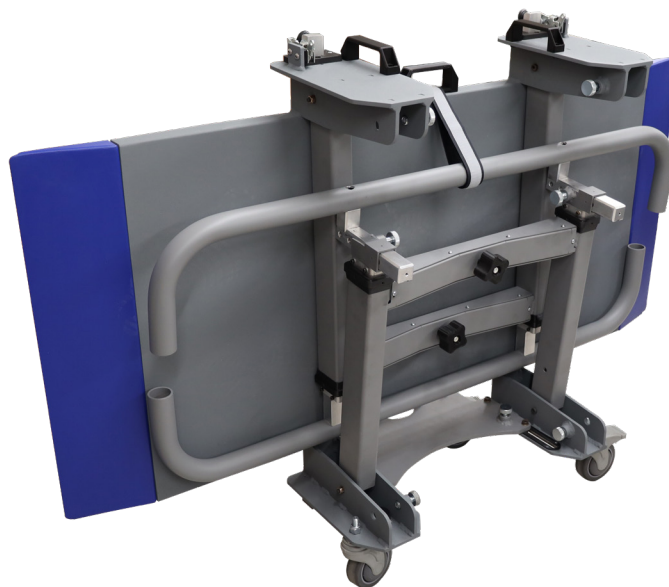


PTPB1000

## STANDARD CONFIGURATIONS:

- |                       |  |
|-----------------------|--|
| <input type="radio"/> | <b>PTPB1000</b> - Portable Parallel Bars<br>12.25 - 17.5"W x 60"L x 39.5"H |
|-----------------------|--|

QTY:



800.701.5122  
armedicamfg.com